



GUILDFORD & WAVERLEY SOCIAL PRESCRIBING SERVICE

NEWSLETTER

JANUARY 2023 | ISSUE 6

GUILDFORD & WAVERLEY SOCIAL PRESCRIBING TEAM



Nicola Freeman
Service Manager



Jonathan Knight



Helena Routledge



Diana Rang



Kate Jones



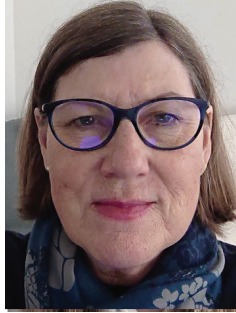
Karina Young



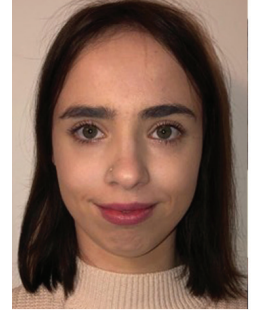
Catherine Johnson



Francesco Agyei



Helene Steinfeldt-Kristensen



Rachel Truelove

“ Our message for January is one of hope and support, as many of the most vulnerable are being hit the hardest by the increase in living costs. Please refer any of your patients who are struggling financially so we can help them access the support that is available to them ”

Surrey Wide Support

DEBT SUPPORT

There are numerous support options to help people in debt. Some of the agencies we use the most are;

- Citizens Advice
- Christians Against Poverty
- 3 Counties Money Advice
- Money Matters Budgeting Courses
- Money Advice Service

SURREY CRISIS FUND

The Surrey Crisis fund is a discretionary fund run by Surrey County Council providing financial help to Surrey residents who have nowhere else to turn in an emergency or after a disaster.

Visit Surrey Crisis Fund

(surreycc.gov.uk)(opens in new tab) or call 0300 200 1008.

Referrals

Any member of the practice staff and any health or social care professional can refer to the **Social Prescribing service**.

Please find a copy of the referral form attached to the accompanying email.



TO CONTACT THE SOCIAL PRESCRIBING TEAM EMAIL: INFO@VASWS.ORG.UK

Support in North & East Guildford PCN's

HOUSEHOLD SUPPORT FUND

GUILDFORD HOUSEHOLD SUPPORT FUND

Household support fund - Guildford Borough Council

The Household Support Fund helps ease financial pressure on residents with low incomes. It offers help with food, energy bills and other essential household items. £400 is the most that can be awarded

Call **01483 458055** if you need help completing the form.



FOODBANKS

There are foodbanks covering all residents in both North & East Guildford PCN's.

Foodbanks are in:

North Guildford, Woking, South Woking, Leatherhead & Cobham.

COMMUNITY FRIDGES

No referral required: You can go as regularly as needed and take what you need from the stock they provide;

Guildford – Zero Carbon, Guildford Town Centre, GU1 4EH (Tues and Thurs 10:30am - 4pm)

Guildford - The Hive, Park Barn, Guildford GU2 8EN (Mon-Fri 10am - 3pm)

Knaphill - Holy Trinity Church Grounds, Chobham Road, Knaphill, GU21 2SX (Mon-Fri 11am -3.30pm)

Leatherhead – Leatherhead Community Hub, NLCC, Kingston Road KT22 7PX (Weds & Thurs 1-2pm)

HYGIENE, BABY BANKS, CLOTHES BANKS & HOUSEHOLD ITEMS

Hygiene items and everything you need for babies can be sourced.

Also, Thrive at the Hive offer a pay-as-you-feel basis and stock the following items; clothing for all ages, kitchen & homeware items, Shoes for all sizes, Toys, children's Books, and even buggies.

GUILDFORD BABY BANK

BABY BASICS - MERROW

GUILDFORD HYGIENE BANK

WOKING HYGIENE BANK

THRIVE AT THE HIVE, GUILDFORD

Support in East & West Waverley PCN's

HOUSEHOLD SUPPORT FUND

Waverley Household Support Fund

Waverley Borough Council
Financial support for residents

Help is available towards:

Food, Utilities - gas, electricity and water, essentials linked to energy and water such as warm clothing, boiler repair, essential household appliances such as a cooker, washing machine etc, essential household items such as school uniform, bedding etc.

If you need a paper copy of the form, please contact us on **01483 523204**

FOODBANKS

There are foodbanks covering all residents in both East and West Waverley PCN's.

Chilworth, Godalming, Cranleigh, Haslemere, Alton, Bordon, Headley, Liss, Liphook & Farnham

COMMUNITY FRIDGES

No referral required: You can go as regularly as needed and take what you need from the stock they provide;

Haslemere – Hasleway Community Centre, Lion Green, Haslemere, Surrey GU27 1LD (Weds & Fri 10.30am – 12noon)

Godalming - Denningberg Centre, Godalming, GU7 1HP (Mon-Fri 10am-2pm)

Farnham - Brambleton Hall, Talbot Road, Farnham GU9 8RR (Every Friday afternoon)

Farnham - Hale Community Centre, 130 Upper Hale Road, Farnham GU9 OJH (Mon, Weds & Fri 12noon – 1.30pm)

HYGIENE & BABY BANKS

Hygiene items and everything you need for babies can be sourced via these banks;

WAVERLEY HYGIENE BANK

THE HASLEMERE HYGIENE BANK

CRANLEIGH BABY BANK